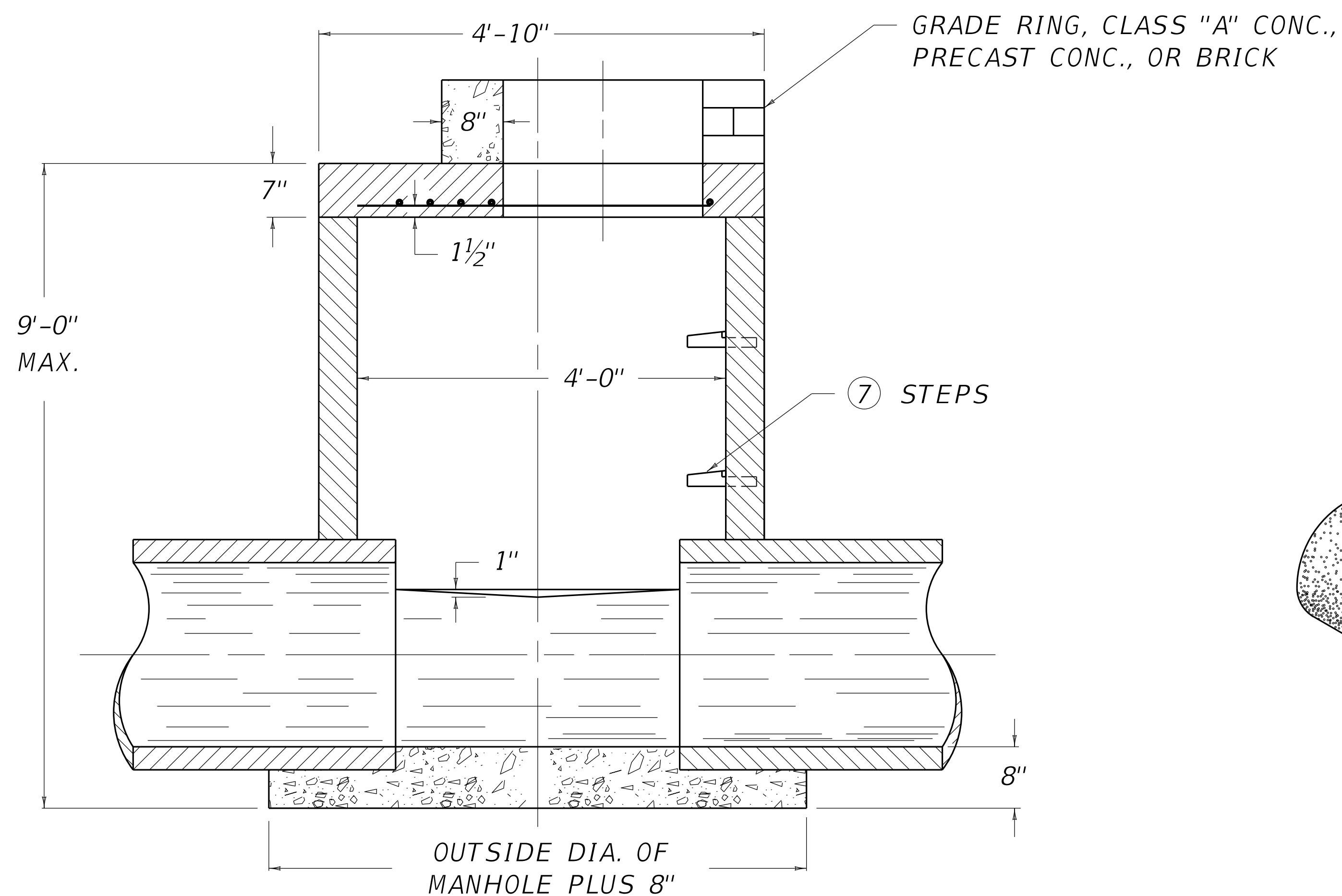
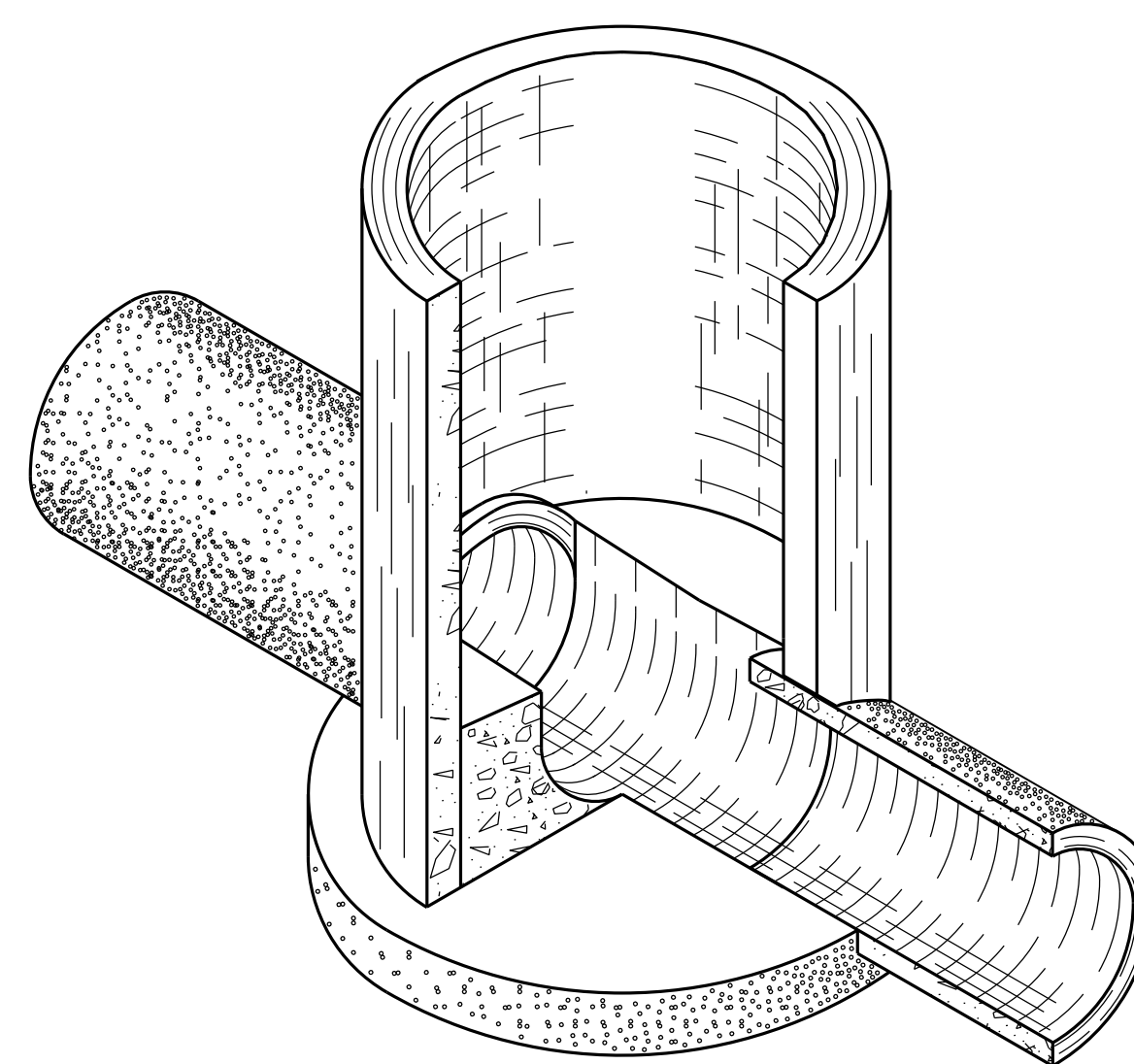


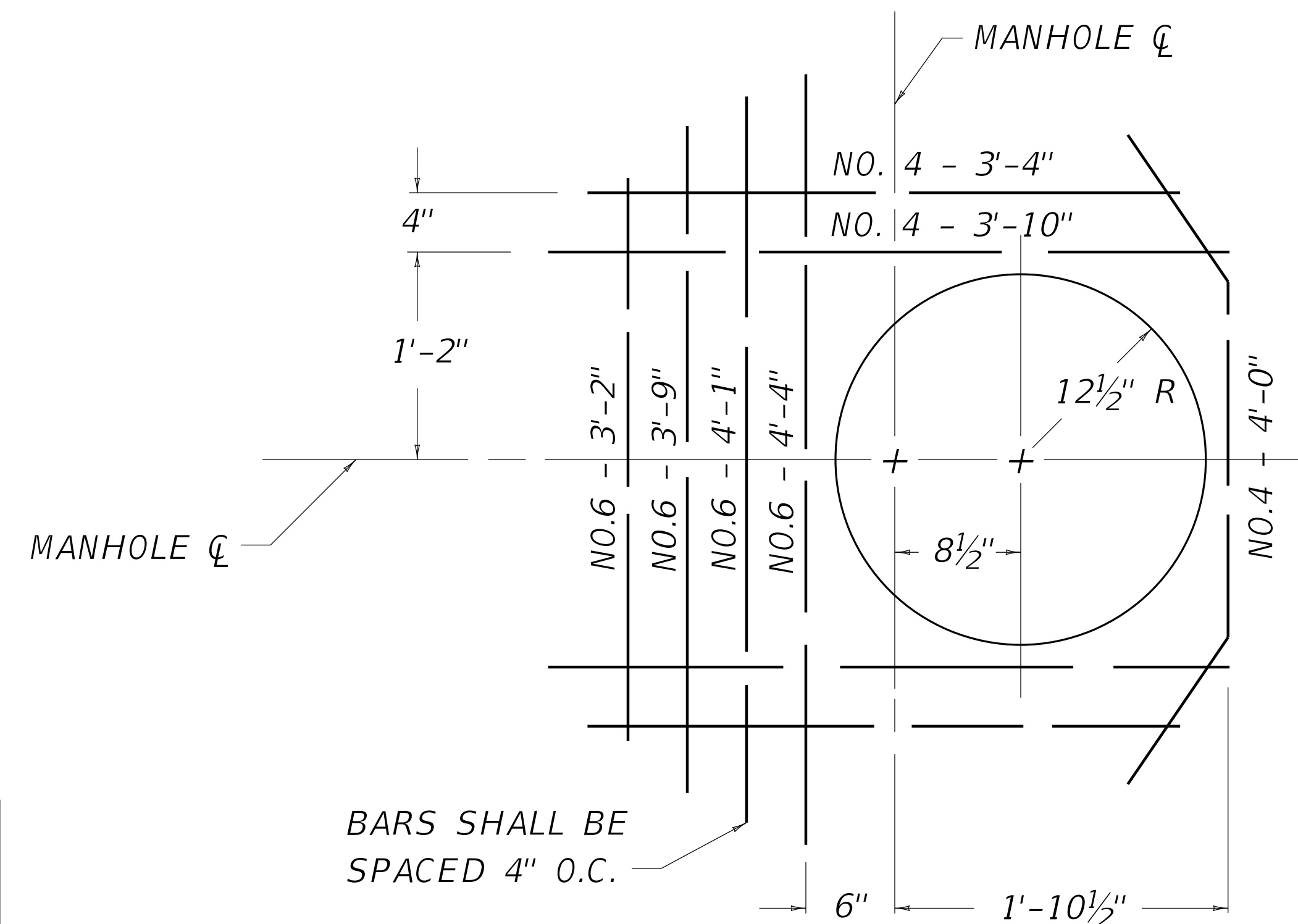
PLAN VIEW



SECTION A-A



ISOMETRIC OF BASE



DETAIL "A"
DIMENSIONS AND
STEEL PATTERN

~ NOTES ~

- BID ITEM AND UNIT TO BID
MANHOLE TYPE A EACH
- SEE CUR. STD. DWG. RDM-105 FOR CASTINGS TO BE USED IN TRAFFIC AREAS AND CUR. STD. DWG. RDM-100 FOR CASTINGS TO BE USED IN NON-TRAFFIC AREAS.
 - THE RISER SECTION MAY BE PRECAST CONCRETE PIPE OR CAST-IN-PLACE CONCRETE. A CONCENTRIC CAST-IN-PLACE CONE OR PRECAST CONCRETE CONE MAY BE PERMITTED, PROVIDED HEIGHT LIMITATIONS WOULD PERMIT.
 - THE MAXIMUM SIZE OF INTERCEPTED PIPE SHALL BE 27".
 - COVER OVER HIGHEST PIPE, EXCLUSIVE OF PAVEMENT, SHALL BE 2'-0".
 - CAST-IN-PLACE CONCRETE MANHOLES SHALL HAVE 8" THICK WALLS.
 - SEE PROPOSAL NOTES OR STANDARD SPECIFICATIONS FOR ADDITIONAL REQUIREMENTS.
 - SEE CUR. STD. DWG. RDM-055 FOR STEP TYPE, SPACING AND DETAIL.

USE WITH CUR. STD. DWGS.
RDM-055 RDM-100 RDM-105

REVISION DATE: 12/01/2015
REVISION NUMBER: 0

SUBMITTED 12-01-2015 DATE
DIVISION DIRECTOR
APPROVED 12-01-2015 DATE
STATE HIGHWAY ENGINEER

DRAINAGE



COMMONWEALTH OF KENTUCKY
DEPARTMENT OF HIGHWAYS



MANHOLE

TYPE A

STANDARD DRAWING NUMBER
RDM-001-07